

# GRAPHTEC

Extensive lineup adapted to a wide variety of applications

# Instrument Product Line-up

midi LOGGER  
**HV GL2000**



midi LOGGER  
**GL980**



midi LOGGER  
**GL240**



DATA PLATFORM  
**GL7000**



midi LOGGER  
**GL840 Series**



PetitLOGGER  
**GL100 Series**



[www.graphteccorp.com](http://www.graphteccorp.com)

# Data Logger

## Isolated input, multi-channel logger midi LOGGER GL840 series



Multi-input model  
GL840-M

High withstand voltage model  
GL840-WV

- Max. 10ms sampling
- Σ type A/D converter
- Temp. Humidity, Voltage, Pulse/Logic
- Up to 200 channels
- LAN USB SDCard

- Multifunction analog inputs
  - Voltage: 20 mV to 100 V
  - Temp.: TC: R, S, B, K, E, T, J, N, W (WRe5-26) RTD: Pt100, Pt1000 (IEC750), JPt100 (JIS)
  - Humidity: 0 to 100% (the B-530 option is required)
- Pulse/Logic inputs
  - Pulse: 4ch (Accumulating, Instant, or Rotation)<sup>\*2</sup>
  - Logic: 4ch<sup>\*2</sup>
- Flexible input system for wide array of applications
- WLAN (option) capable for remote monitoring
- Maximum sampling rate up to 10 ms<sup>\*3</sup>
- Extended memory capacity using SD memory card
- Combining GL100 and GL840 by using WLAN

## 10 channel handy logger midi LOGGER GL240

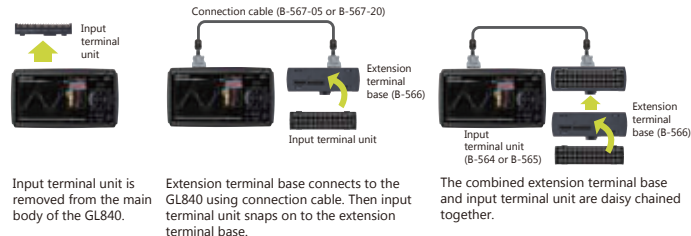


- Max. 10ms sampling
- Σ type A/D converter
- Temp. Humidity, Voltage, Pulse/Logic
- 10 channels
- USB SDCard

- Multifunction analog inputs
  - Voltage: 20 mV to 100 V
  - Temp.: TC: R, S, B, K, E, T, J, N, W (WRe5-26)
  - Humidity: 0 to 100% (the B-530 option is required)
- Pulse/Logic inputs
  - Pulse: 4ch (Accumulating, Instant, or Rotation)<sup>\*2</sup>
  - Logic: 4ch<sup>\*2</sup>
- Multifunction input in 10 isolated channels
- Maximum sampling rate up to 10 ms<sup>\*3</sup>
- Extended memory capacity using SD memory card
- WLAN (option) capable for remote monitoring
- Combining GL100 and GL240 by using WLAN

\*1: WLAN is available in limited regions. \*2: Select either Pulse or Logic input, and use the optional input/output cable (B-513). \*3: Sampling rate is limited by the number of channels to be used.

### Expandable up to 200 channels in GL840



- Support the GS sensors in GL840
- Temperature, acceleration, and others are able to measure using the GL sensors.

### Combining GL100-WL and GL240/GL840

GL100-WL can now be connected to the GL240 or GL840 as a remote sensor.



## PetitLOGGER GL100 series

- Supports a wide array measurement by exchanging the sensor
- Wireless connection to the PC/Smart devices via WLAN
- Power source : Battery (AA x 2) or USB bus power



GL100-WL (with wireless LAN)      GL100-N (without wireless LAN)

- Wireless LAN GL100-WL
- USB Interface
- microSD memory card
- Sensor, input terminal, adapter 7types
- PC
- Smart device GL100-WL

\*4: WLAN is available in limited regions.

## GS sensors

The sensor is connected to the GS sensor port of the GL840 and GL100.

Sensors			
<b>Temp./Humidity</b> GS-TH Temp.: -20 to 85°C Humidity: 0 to 100% RH Dew-point temp., Accumulated temp.	<b>Acceleration/Temp.</b> GS-3AT Try-axial: max. 10 G Temp.: -10 to 50°C	<b>Carbon dioxide (CO<sub>2</sub>)</b> GS-CO <sub>2</sub> CO <sub>2</sub> concentration: 0 to 9999 ppm	<b>Illuminance/UV</b> GS-LXUV Illuminance: 0 to 200 klx UV intensity: 0 to 30 mW/cm <sup>2</sup> Accumulated Illum <sup>2</sup> : 0 to 9999 h
Dual port adapter		Input terminal / Adapter	
<b>Dual port adapter</b> GS-DPA Connects two sensors of GS-TH, GS-CO <sub>2</sub> , GS-LXUV.	<b>Thermistor terminal</b> GS-4TSR 4ch Temp.: -40 to 120°C <sup>*</sup> <sup>*</sup> It varies by the sensor.	<b>Current sensor adapter</b> GS-DPA-AC 50, 100, 200 A Max. Single-phase, three-phase power system	<b>Voltage/Temp. terminal</b> GS-4VT 4ch Voltage: max. 50 V Temp.: TC, K or T 4ch Logic or Pulse
<b>Extension cable</b> Extension cable for input module GS-EXC Cable length: 1.5 m	<b>Thermistor sensor</b> Normal type GS-103AT-4P Ultrathin type GS-103JT-4P	<b>AC current sensor</b> 50 A    100 A    200 A	

# Data Logger / Data Acquisition

## High-speed, High-Voltage, Isolated 4 channel Data Logger midi **LOGGER HV GL2000**



Simultaneous sampling Isolated	<b>CAT III</b>	Max. 1MS/s (1μs)
Voltage Temp., Humidity, Pulse/Logic	Built-in RAM 4MS/ch	Built-in Flash memory 4GB
USB SDcard		

- Multifunction analog inputs
  - Voltage** 20 mV to 1000 V DC, 1-5 V DC, 10 mV to 1000 V rms
  - Temp.** TC: K, J, E, T, R, S, B, N, W (WRε5-26)
  - Humidity** 0 to 100% (the B-530 option is required)
- Pulse/Logic inputs
  - Pulse** 4 channels (\*5)  
Accumulating, instant or RPM
  - Logic** 4 channels (\*5)
- 4ch High Speed Simultaneous Sampling
- CAT III 600V Compatible
- Measure AC 600 V Measurement with True-rms
- Built-in High-capacity RAM (4 M samples/ch) and Flash memory (4 GB)
- Large Easy-to-read 7-inch LCD

\*5: Select either Pulse input or Logic input, and use the optional input/output cable for GL (B-513 option).

## Isolated, simultaneous 8 channel data logger midi **LOGGER GL980**



Simultaneous sampling Isolated	Max. 1MS/s (1μs)	Voltage Temp., Humidity, Pulse/Logic
Built-in RAM 4MS/ch	Built-in Flash memory 4GB	USB SDcard

- Multifunction analog inputs
  - Voltage** 20 mV to 500 V DC, 1-5 V DC, 10 mV to 250 V rms
  - Temp.** TC: K, J, E, T, R, S, B, N, W (WRε5-26)
  - Humidity** 0 to 100% (the B-530 option is required)
- Pulse/Logic inputs
  - Pulse** 4 channels (\*5)  
Accumulating, instant or RPM
  - Logic** 4 channels (\*5)
- 8ch High speed simultaneous sampling
- Includes 500 V measurement with 16-bit A/D converter
- Equipped with true-rms measurement
- Large built-in RAM (4 M samples/ch) and built-in Flash memory (4 GB)
- Large easy-to-read 7-inch LCD

## Modular Type Data Acquisition Unit **DATA PLATFORM GL7000**

Hi-speed <b>1MS/s</b>	Multi-channels max.112ch	High voltage <b>1000 V</b>	Huge memory capacity 128GB SSD
--------------------------	-----------------------------	-------------------------------	-----------------------------------



Supports touch panel

Supports the GL-Connection software  
Allows to use with other units of GL series

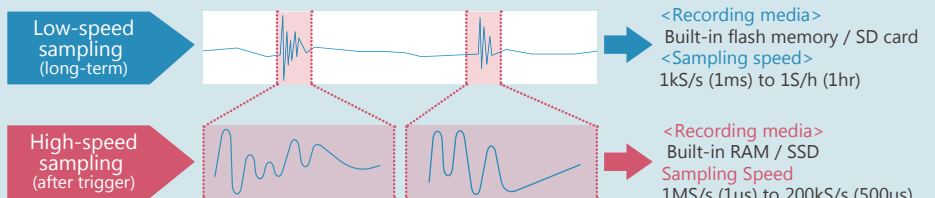
\* Example, the option of 6 modules and the display are installed.

<b>Voltage Module</b>  <b>GL7-V</b> Voltage 10ch/unit Max. 1kS/s (1ms) Simultaneous sampling Isolated	<b>Voltage/Temperature Module</b>  <b>GL7-M</b> Voltage, Temp. 10ch/unit Max. 100S/s (10ms) Type A/D converter Isolated	<b>High speed Voltage Module</b>  <b>GL7-HSV</b> High speed 4ch/unit Max. 1MS/s (1μs) Simultaneous sampling Isolated	<b>High Voltage Module</b>  <b>GL7-HV</b> Voltage 2ch/unit Max. input voltage 1000V Max. 1MS/s (1μs) Isolated	<b>DC Strain Gauge Module</b>  <b>GL7-DCB</b> Strain, Voltage 4ch/unit Strain gauge, Sensor Max. 100kS/s (10μs) Isolated
<b>Charge (Acceleration) Module</b>  <b>GL7-CHA</b> Charge, Voltage 4ch/unit Charge, IEPE Sensor (TEDS) Max. 100kS/s (10μs) Isolated	<b>Voltage Output Module</b>  <b>GL7-DCO</b> Output voltage 8ch/unit Max. 100kS/s (10μs) Captured data, Arbitrary waveform	<b>Logic/Pulse Module</b>  <b>GL7-L/P</b> Logic/Pulse 16ch/unit Max. 1MS/s (1μs) Simultaneous sampling	<b>SSD Module</b>  <b>GL7-SSD</b> 128 GB storage	<b>Display Module</b>  <b>GL7-DISP</b>

\* Optional input or output cable is required.

### NEW Features! **Dual-Sampling Feature (Firmware version 2.0 or later)**

Dual sampling speed can now be configured at the same time.  
While recording long intervals on the slow sampling speed, trigger set can start recording dynamic transient signals at a fast sampling speed.



# Options and Accessories

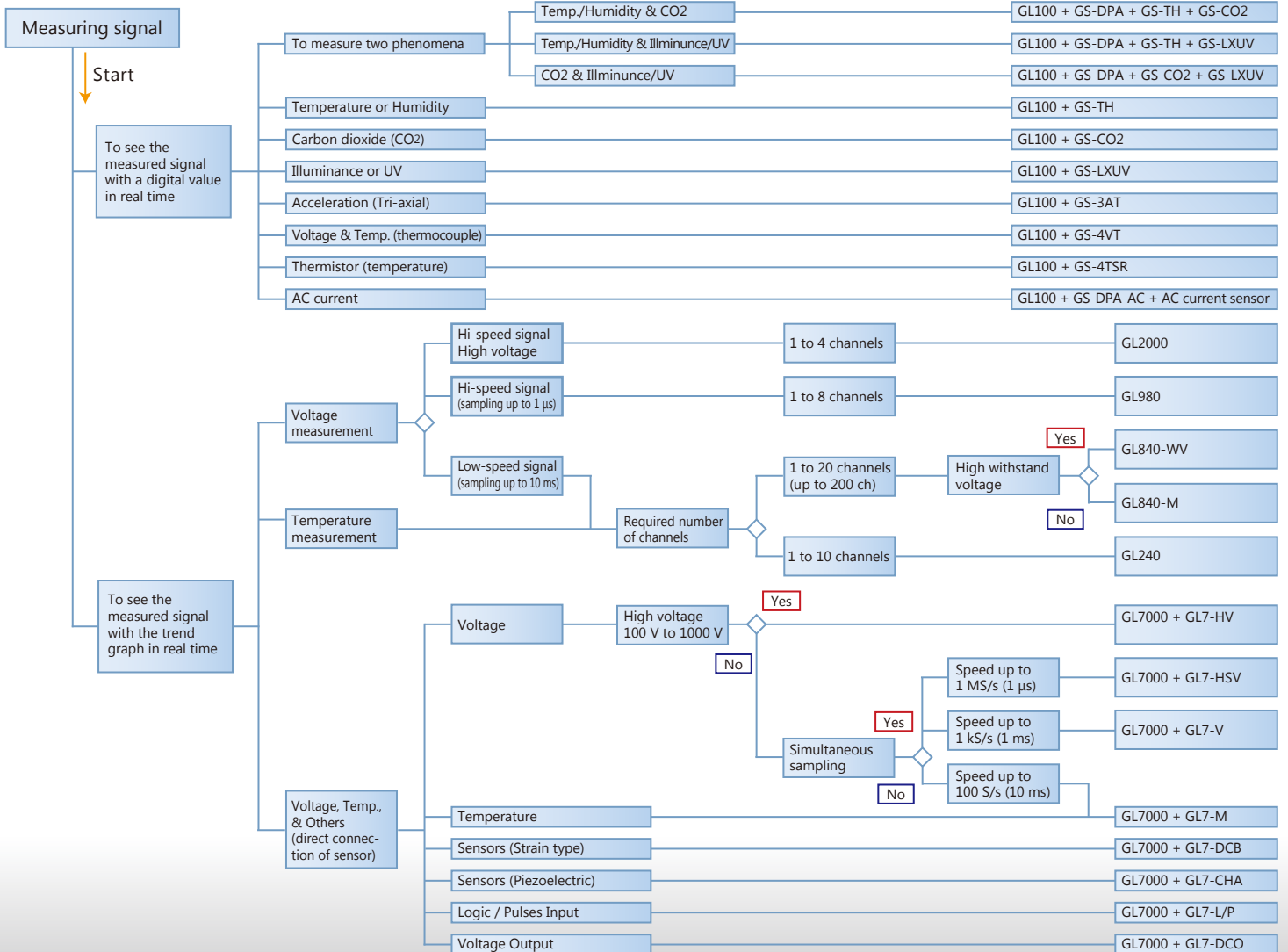
Model	Item	GL240	GL840 series	GL2000/980	GL7000 series
B-513	Input/Output cable for GL series	✓	✓	✓	✓
B-514	DC drive cable	✓	✓	✓	✓
B-530	Humidity sensor	✓	✓	✓	✓
B-560A	Input connector, screw terminal				✓
B-564	Input terminal (M type)		✓		
B-565	Input terminal (WV type)		✓		
B-566	Base of input terminal		✓		
B-567-05,-20	Connection cable		✓		
B-568	Wireless LAN unit	✓	✓		
B-569	Battery pack	✓	✓	✓	
B-581	Storage case	✓	✓	✓	
B-585	Carrying tool (GL7000 + 3 modules)		✓		✓
B-586	Storage case (GL7000 + 3 modules)		✓		✓
ACADP-20	AC power adapter	✓	✓		
RIC-10A	Probe set for Logic input				✓
RIC-141A	Input cable, Safe probe - BNC			✓	✓
RIC-142	Input cable, BNC - BNC			✓	✓
RIC-143	Input cable, Banana - BNC			✓	✓
RIC-144A	Clip, Alligator (small size) for RIC-143,147			✓	✓
RIC-145	Clip, Alligator (middle size) for RIC-143,147			✓	✓
RIC-146	Clip, Grabber for RIC-143,147			✓	✓
RIC-147	Input cable, Banana - BNC (High voltage)			✓	✓



## Product selection guide

There are a wide variety of measurement as faster signal in the vehicle and equipment test, or slower signal like the temperature in the environment test. The device to capture the signal needs to be selected to fit the required application.

\* Please refer to the inside page of this document for details on each product.



- Due to the possibility of equipment or PC failure, the data files on the instrument will not be guaranteed to be held on the memory. Please make a backup of data whenever possible to avoid data loss.
- Brand names and product names listed in this brochure are the trademarks or registered trademarks of their respective owners.
- Items mentioned are subject to change without notice. For more information about product, please check the web site or contact your local representative.

**⚠ For using equipment in correctly and safely** : Before using it, please read the user manual and then please use it properly in accordance with the description.  
 : To avoid malfunction or an electric shock by current leakage or voltage, please ensure a ground connection and use according to the specification.

**GRAPHTEC**  
 Graphtec Corporation

503-10 Shinano-cho, Totsuka-ku, Yokohama 244-8503, Japan  
 Tel : +81-45-825-6250 Fax : +81-45-825-6396  
 Email : webinfo@graphtec.co.jp

Website <http://www.graphteccorp.com>

